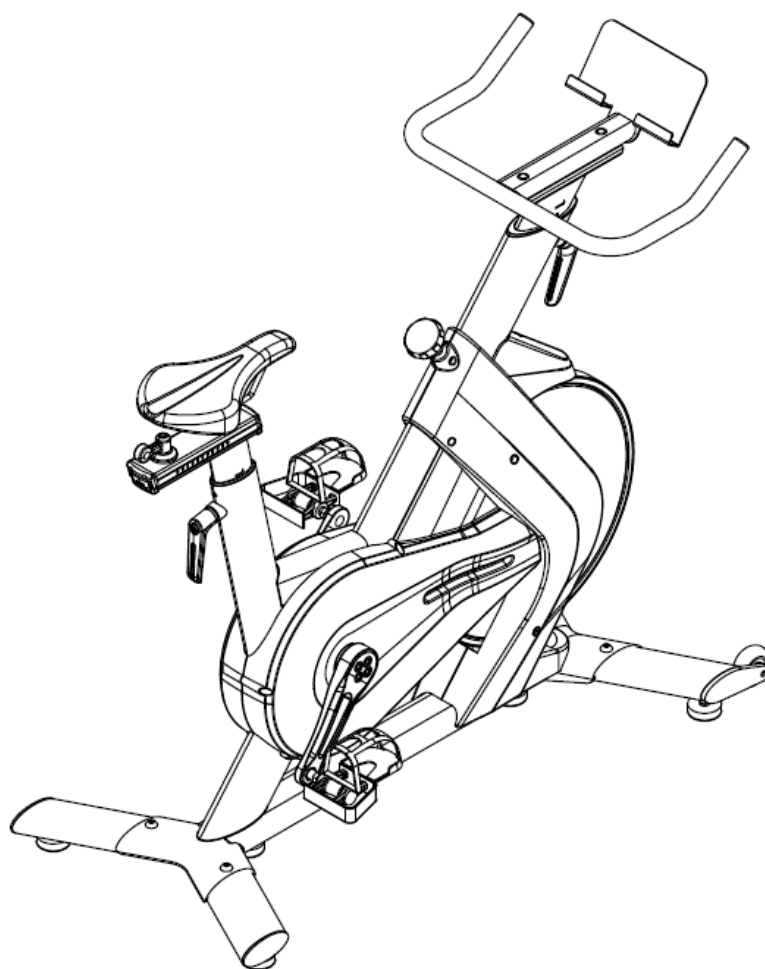




Speed Bike Pro S200

OWNER'S MANUAL



Safe Use Instructions

WARNING: This manual contains important safety information. Please read the safety instructions carefully before using the device.

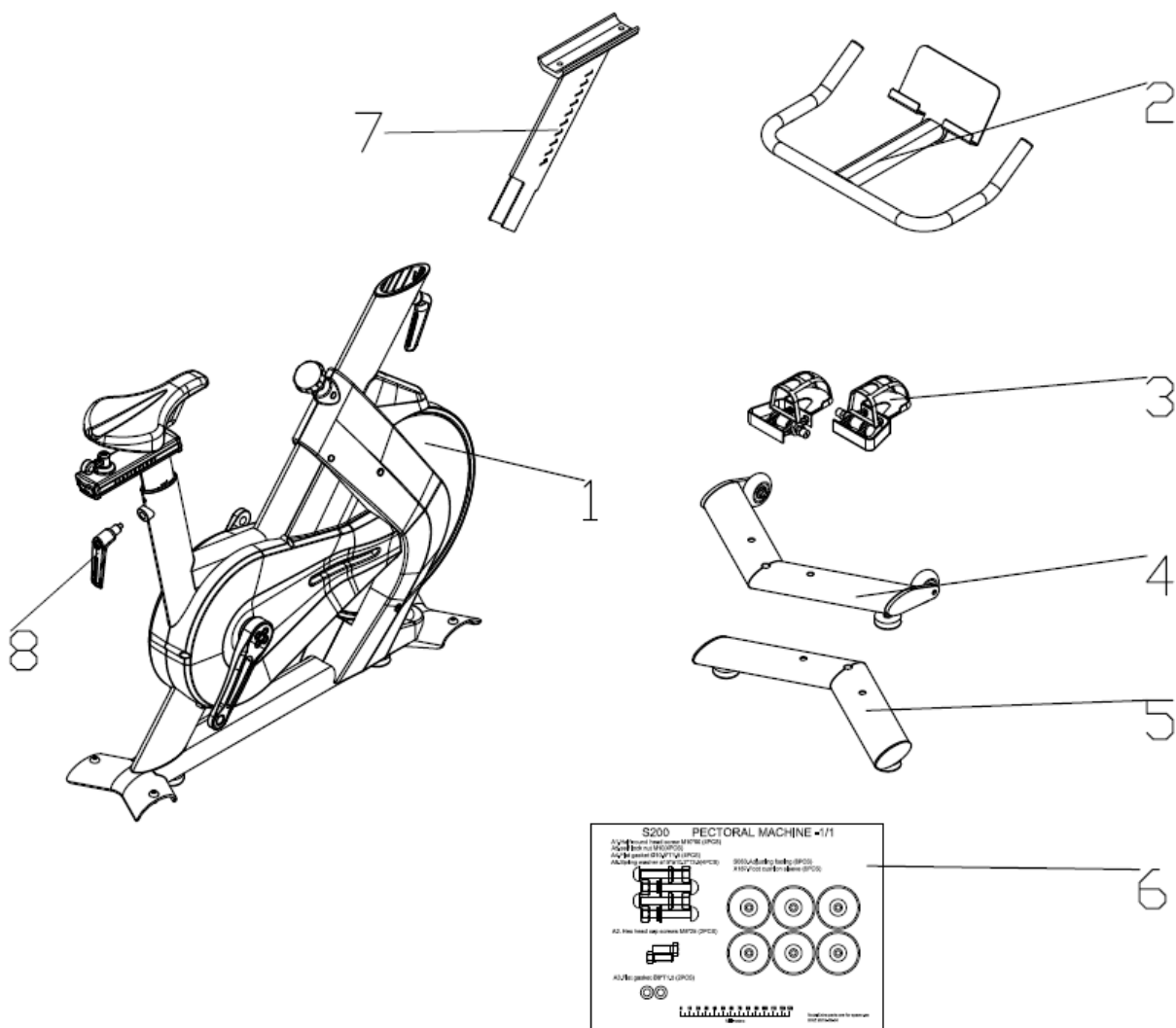
- Children and people with disabilities cannot access or use this device when unsupervised.
- Before training, please read the safety warnings and exercise instructions on the device carefully. If you feel unwell during exercise, please stop training and consult a doctor immediately.
- Incorrect or over-training may damage your health.
- Regular inspection and maintenance of the equipment, to ensure the integrity and robustness of the various parts of the equipment.
- Pay attention to the inspection and maintenance of vulnerable parts on the device.
- If the instrument parts are damaged or an abnormal sound occurs, stop using it immediately until it is repaired.
- The instrument should be installed in a stable place and leveled.
- Before use, adjust the device according to your personal situation, such as the size of the resistance, the position of the saddle, etc.

Technical Details:

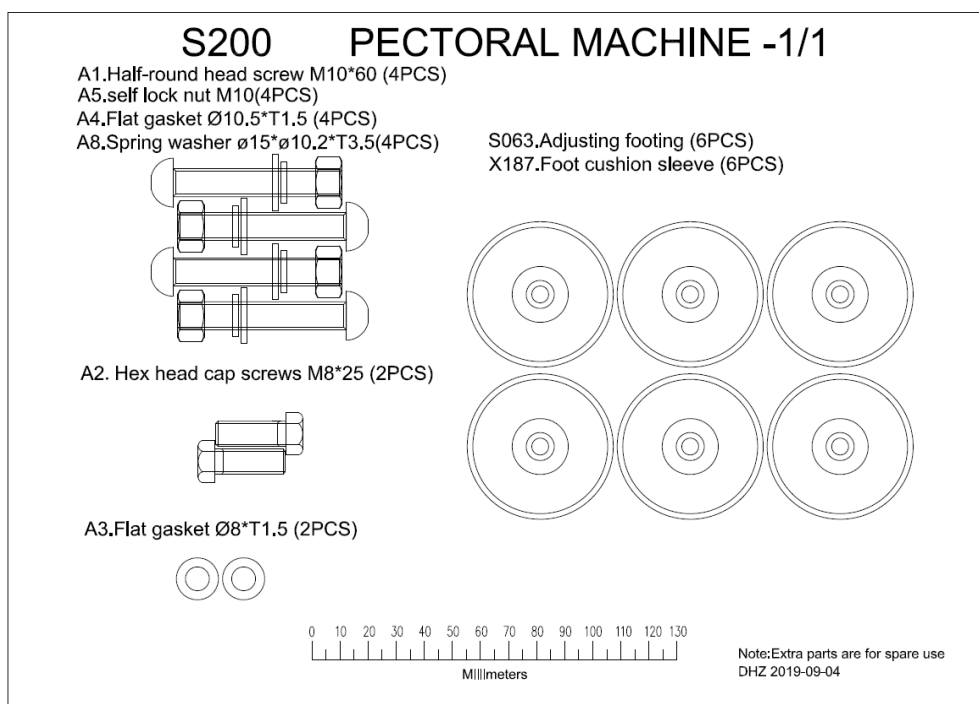
Model	S200
Resistance system	Magnetron resistance system
Drive way	Belt drive
Height limit	150-185cm
Maximum load	150kgs
Weight	48kg
Floor area	107x48x98 cm (LxWxH)
Recommended area	180x100x240 cm (LxWxH)
Console function	Ipad Holder
Resistance	32 Levels
Flywheel	8kg

Assembly steps

Please confirm that the parts in the carton are complete:



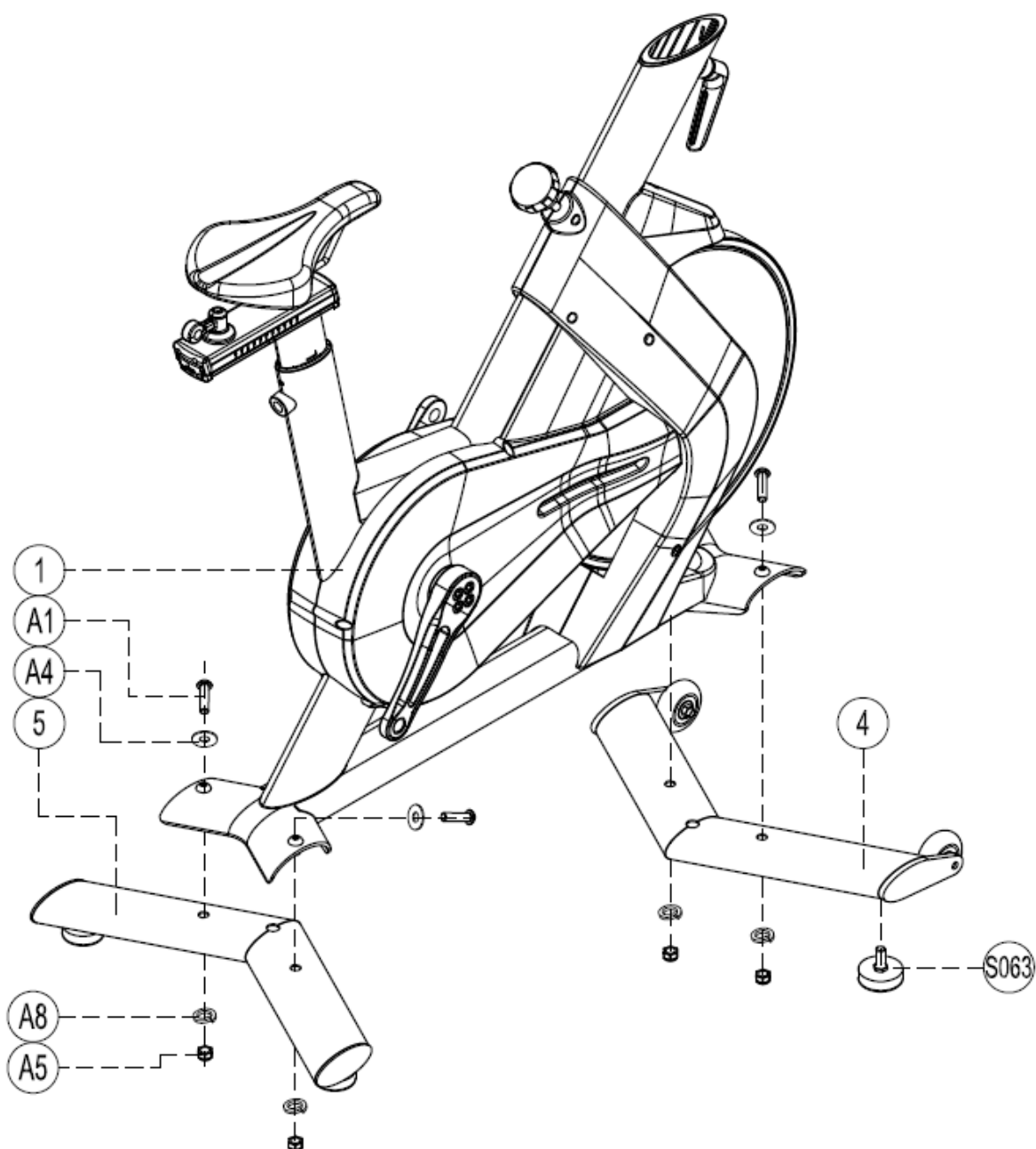
NO	Name	Quantity	NO	Name	Quantity
1.	Bike frame	1	6.	Screw set	1
2.	Handle bar	1	7.	Front adjustment Group	1
3.	Pedal	2	8.	Rear fastening knob	1
4.	Front bottom tube set	1		Manual	1
5.	Rear bottom tube set	1		Toolkit	1



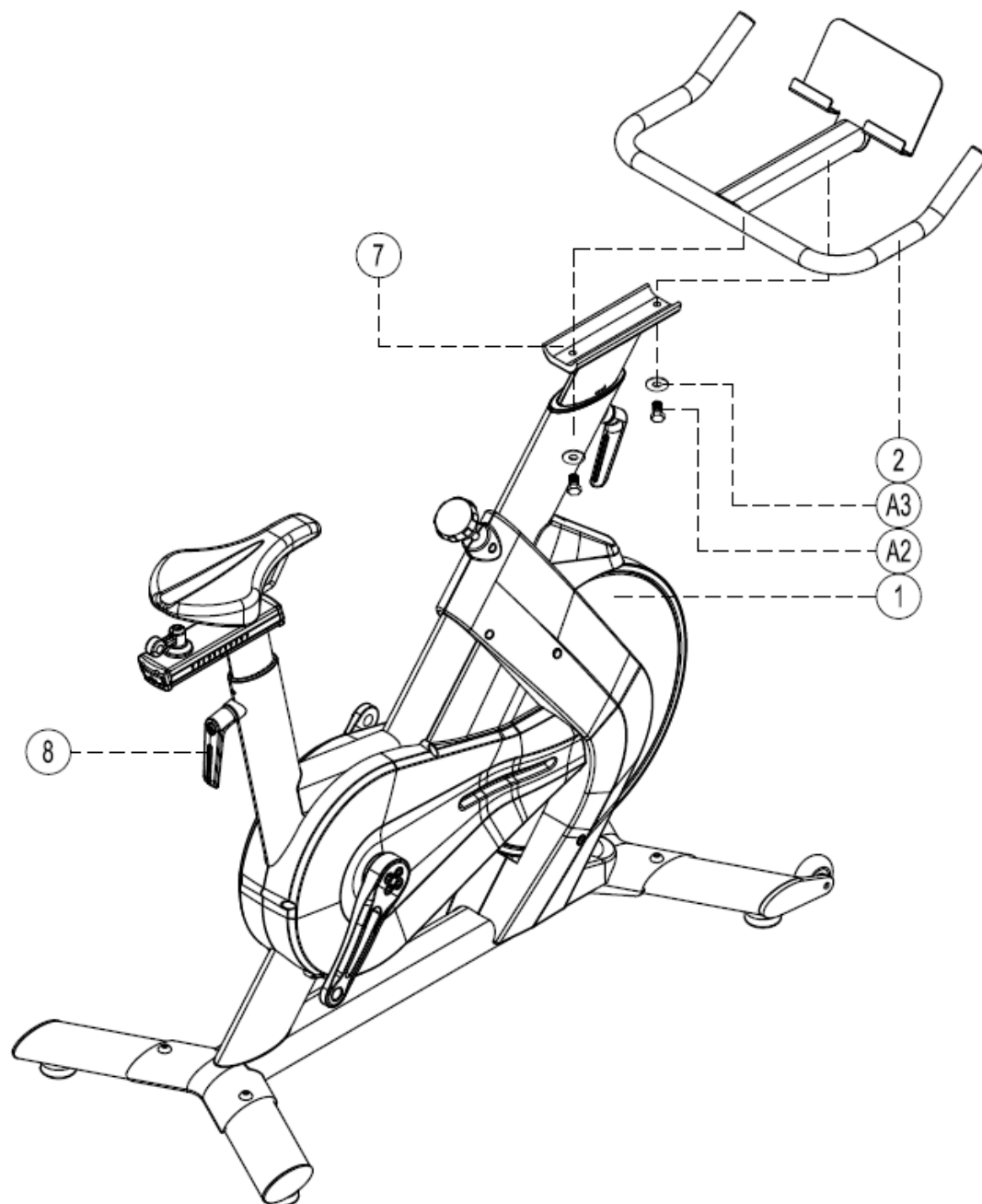
Parts List

Serial Number	Name	Quantity
A1	Half-round head screw (M10*60)	4
A2	Hex head cap screws (M8*25)	2
A3	Flat gasket (ø8)	2
A4	Flat gasket (ø10)	4
A5	Self lock nut (M10)	4
A8	Spring washer (ø10)	4
S063 group	Adjusting footing	6
Tool 1	Inner hexagonal wrench (6#)	1
Tool 2	Inner hexagonal wrench (5#)	1
Tool 3	Inner hexagonal wrench (4#)	1
Tool 4	Open wrench (14-17)	1
Tool 5	Open wrench (10-13)	1
Tool 6	Three-purpose screwdriver	1

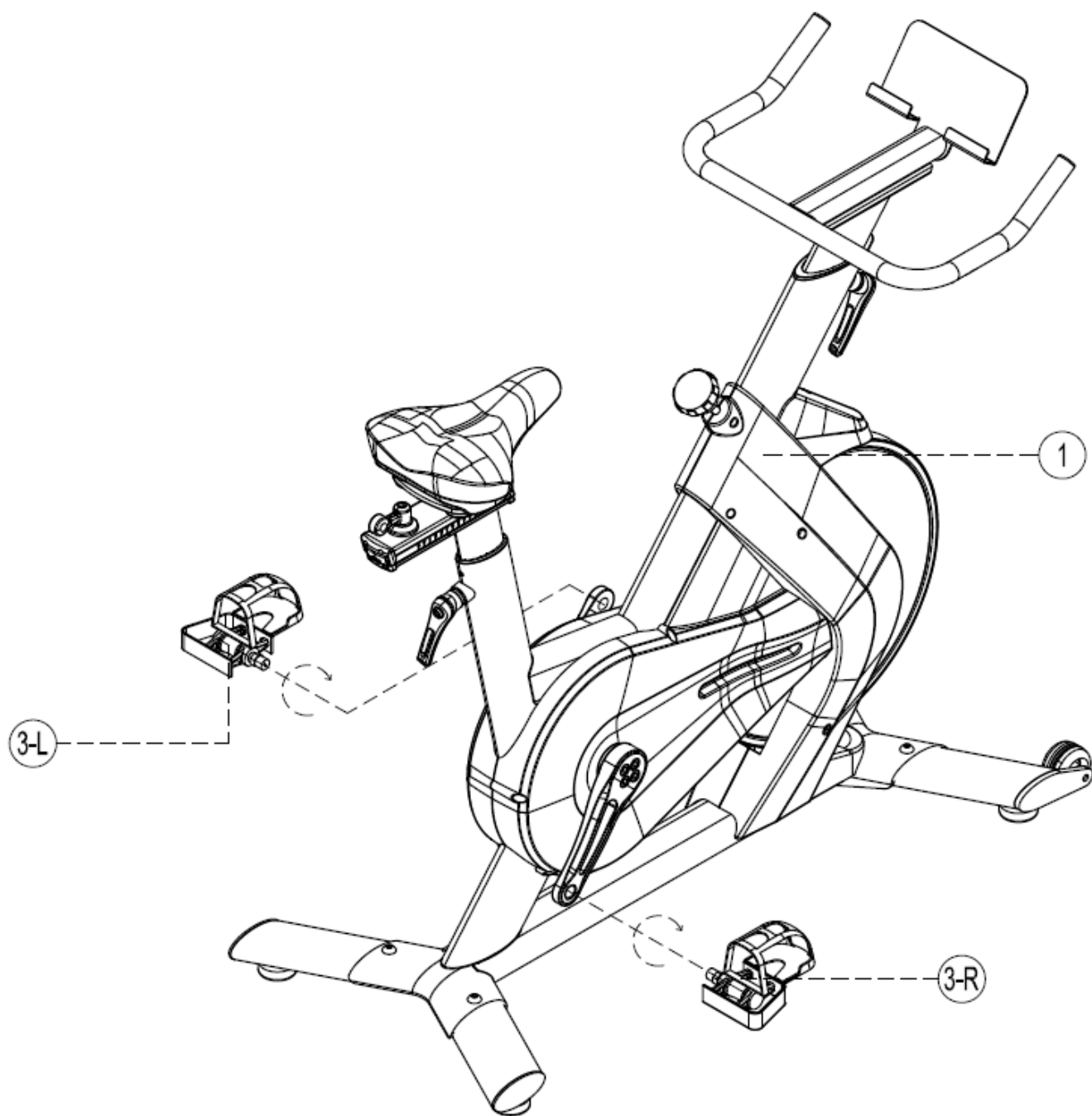
Step 1



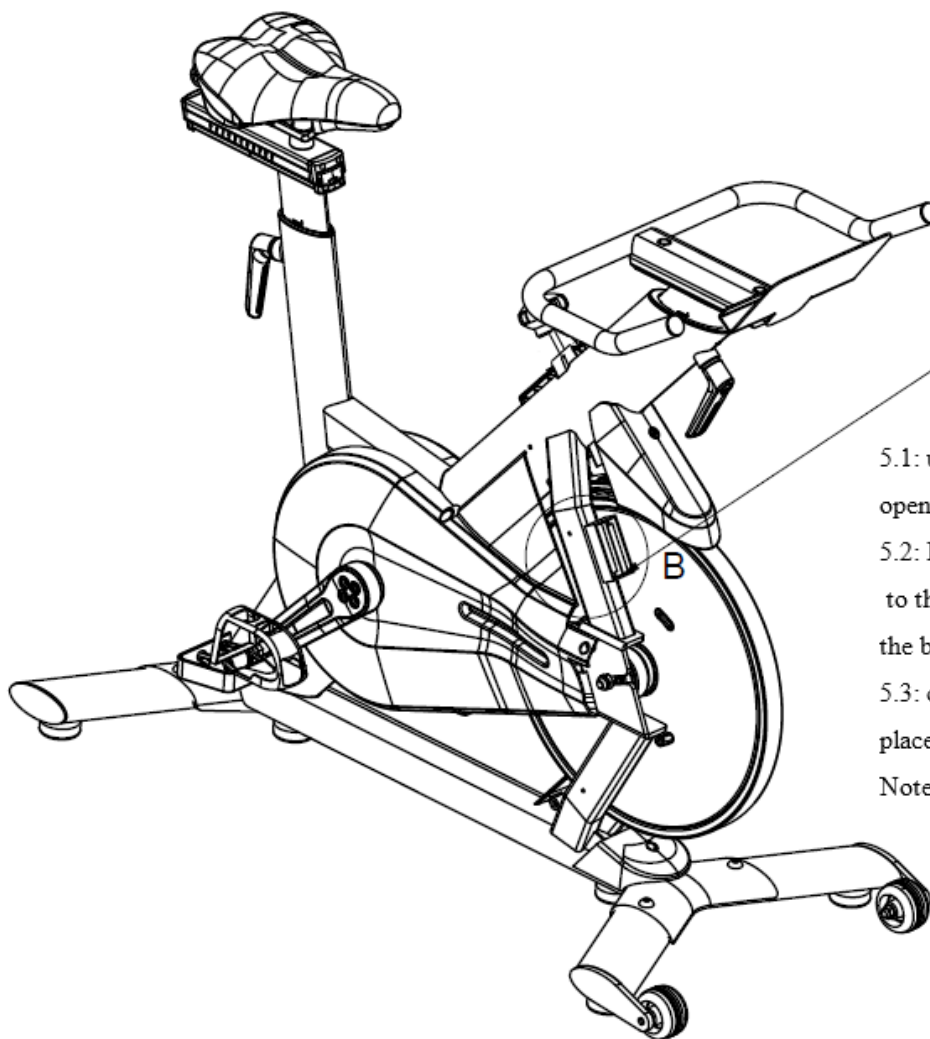
Step 2



Step 3



Step 4



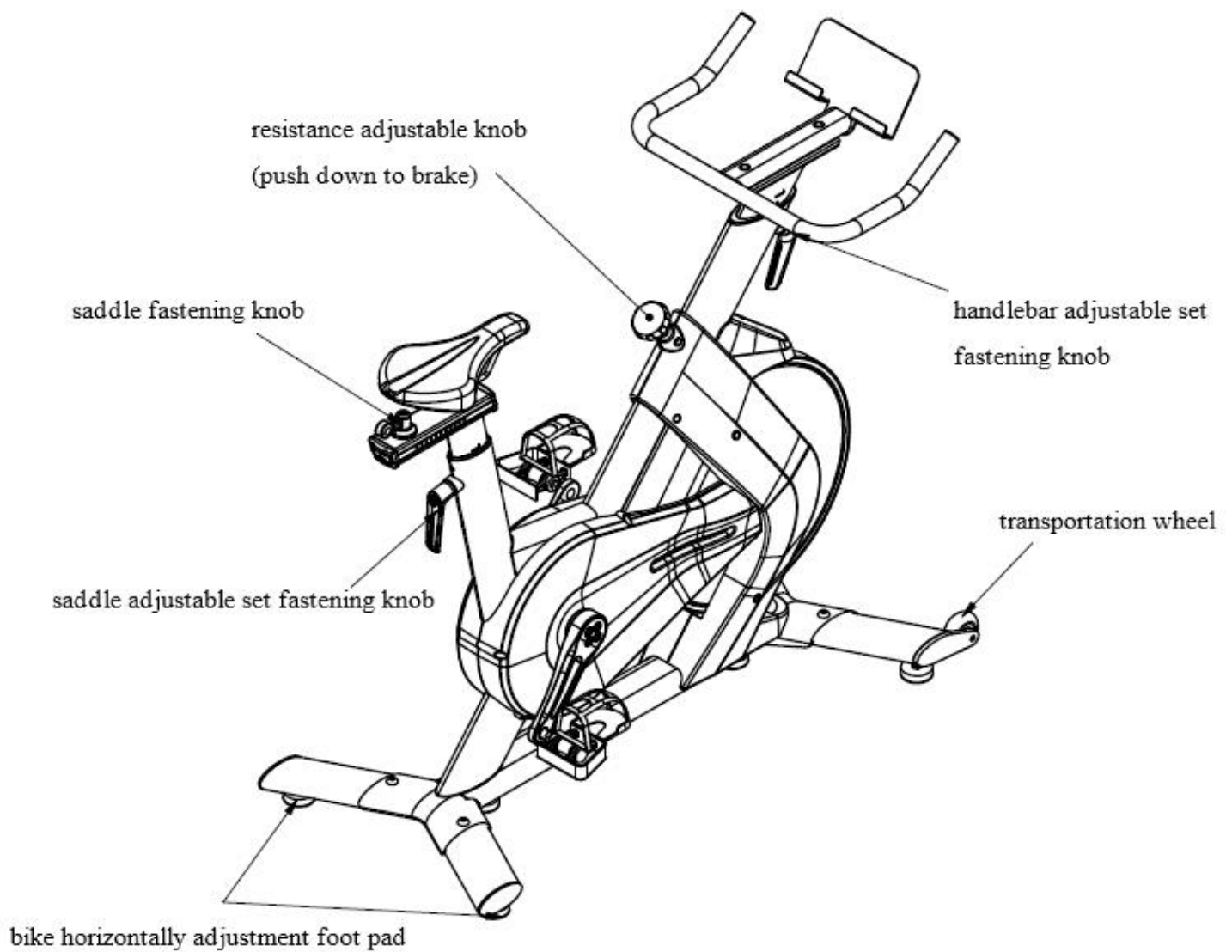
5.1: unpack cover at the right side of bicycle,
open battery box

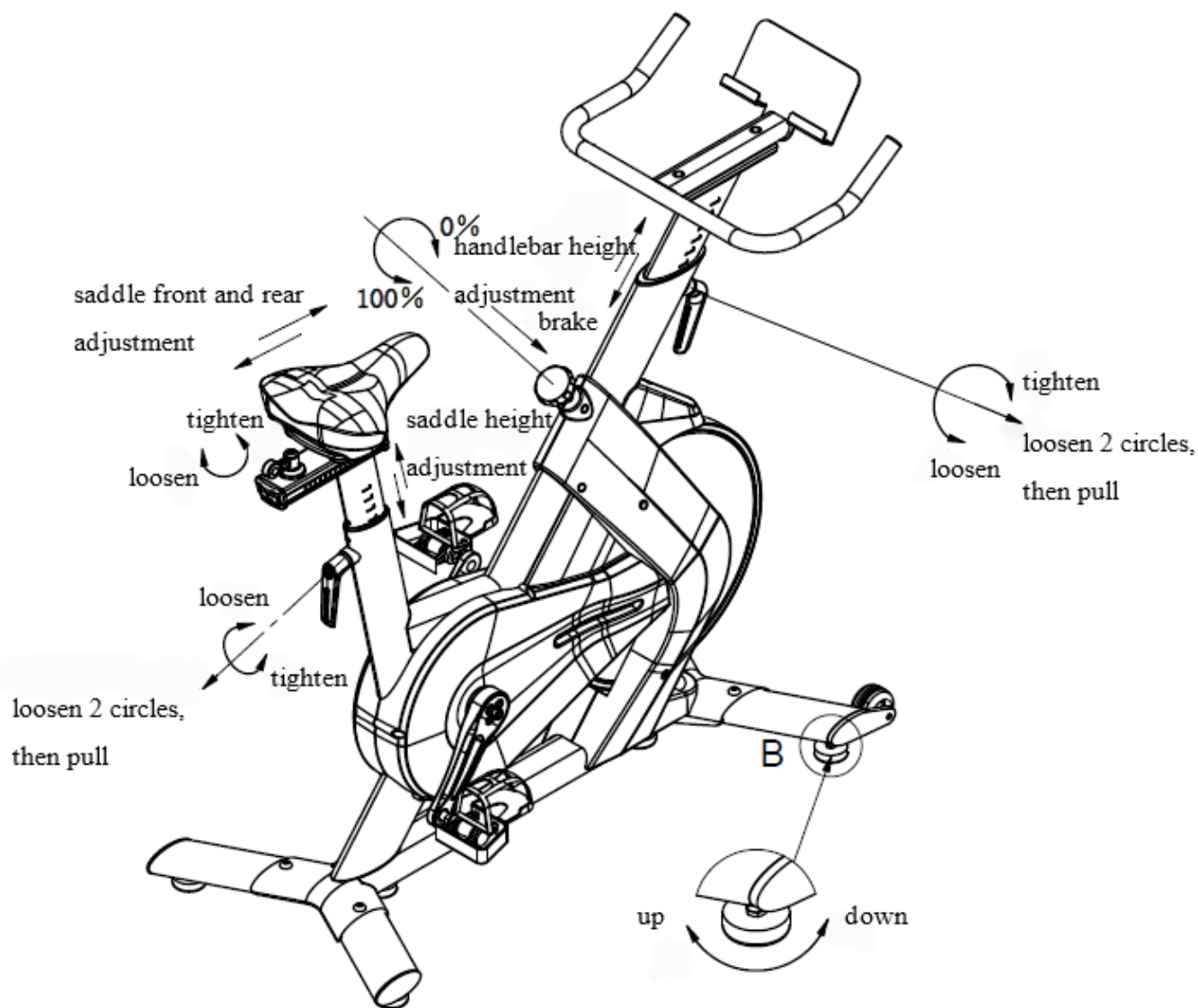
5.2: Install two No. 5 dry batteries according
to the positive and negative positions inside
the battery case.

5.3: close up battery box,install cover back to
place,tighten screws

Note:please put away screws to avoid loosing.

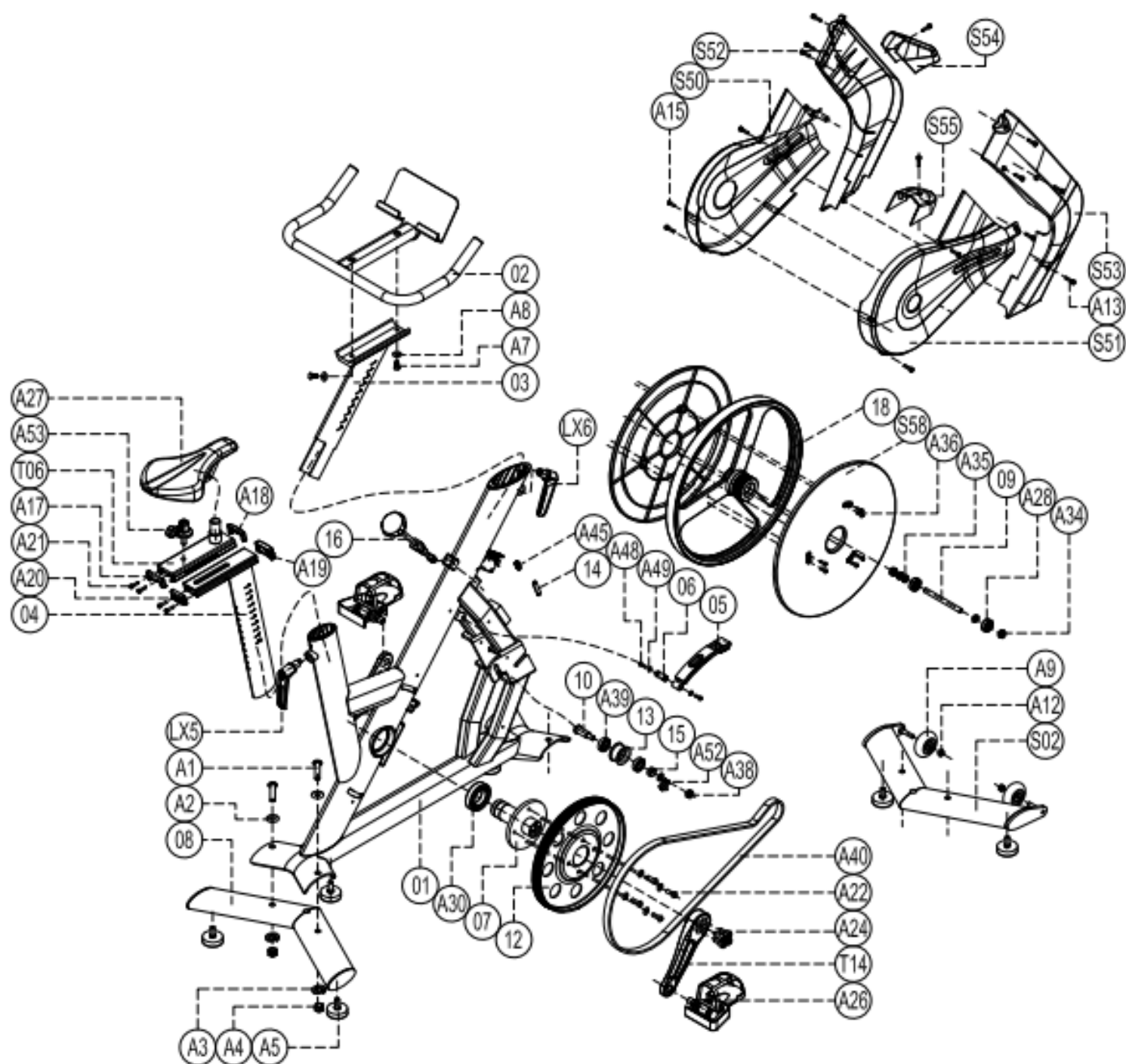
Spinning Bike user adjustment





safety warning: tighten the adjustment switch before use

Exploded View



Part List

Serial No.	Name	Quantity
1	Main frame group	1
2	Handlebar set	1
3	Front adjustable set	1
4	Saddle tube adjustable set	1
5	Brake fixing group	1
T06	Saddle sliding group	1
6	Small rotating shaft	1
7	Central axis group	1
8	Rear foot set	1
9	Front wheel axle	1
10	Tension shaft	1
LX5	Rear pull group	1
LX6	Front pull group	1
T14	Crank	2
12	Pulley	1
13	Idler	1
14	Small pull plate	1
15	Spacer	1
18	Casting front wheel	1
16	Brake pull pin group	1
S02	Front ground group	1
S50	Left belt shell tan translucent	1
S51	Right belt shell tan translucent	1
S52	Left large wheel housing	1
S53	Right large wheel housing	1
S54	Circuit shield Tan translucent	1
S55	Front shield	1
S58	Big wheel shell	1
A1	Semicircular head inner hexagon screw M10*60	4
A2	Flat pad $\Phi 10$	4
A3	Spring washer $\Phi 10$	4
A4	Self-locking nut M10	4
A5	Leveling feet	6
A7	Outer hexagon screw M8*25	2
A8	Flat pad $\Phi 8$	2
A9	PU transportation wheel	2
A12	Self-locking nut M8	2
A13	Cylindrical head inner hexagon screw M5*12	13

A15	Cross semicircular head self-tapping screw M4*12	3
A17	Decorative cover 1	1
A18	Decorative cover 2	1
A19	Decorative cover 3	1
A20	Decorative cover	1
A21	Cylindrical head inner hexagon screw M4*12	8
A22	Semicircular head inner hexagon screw M8*16	4
A24	Cylindrical head inner hexagon screw M10*25	8
A26	Pedal 16/9 thread JT01/JT02	2
A27	Saddle DZS300	1
A28	Deep groove ball bearing 6300	2
A30	Deep groove ball bearing 6008	2
A34	Flat nut M10	2
A35	Thin nut M10	3
A36	Semicircular head inner hexagon screw M5*8	12
A38	Self-locking nut M10	1
A39	Deep groove ball bearing 6002	2
A40	Multi-ditch belt 6PJ-1397	1
A45	Spring TH087-3	1
A48	Semicircular head inner hexagon screw M6*12	2
A49	Flat pad $\Phi 6$	2
A52	Bike chain tension	1
A53	Locking nut handle LZJ046	2

Produced for:

**Gorilla Sports GmbH
Nordring 80
64521 Groß-Gerau
www.gorillasports.eu**